



InfinShine

上海炆和新材料科技有限公司

公司简介



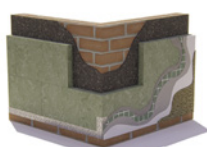
岩棉产品简介

1450
 1.8
 4.0% 0.25mm
 99.5% 0.5% A
 0.035w/(m·K)

性能特点



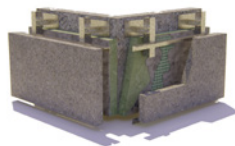
外墙外保温岩棉板系统



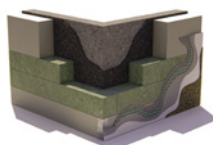
屋顶高强度岩棉



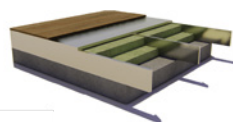
干挂幕墙系统



外墙外保温岩棉带



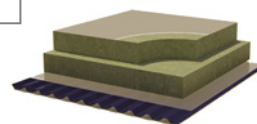
楼板吸音系统



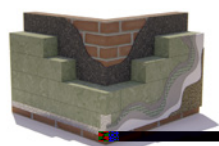
隔墙系统



屋顶岩棉

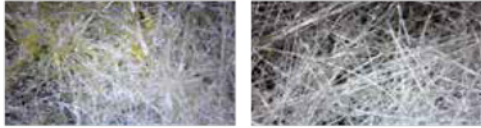


外墙外保温岩棉带

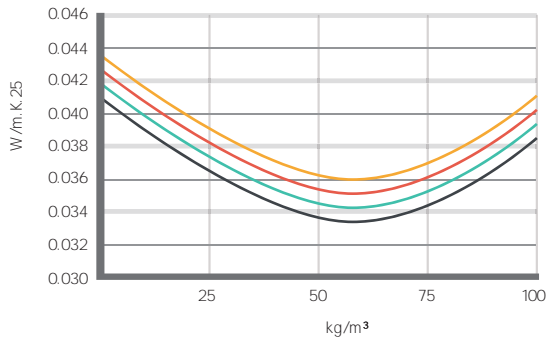
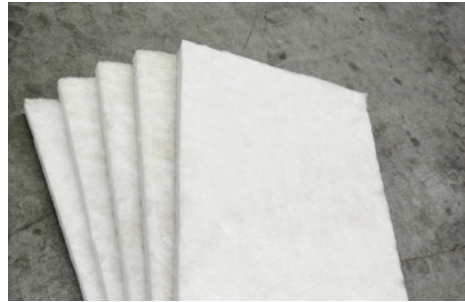


玻璃棉产品简介

性能特点



- | | |
|----|----|
| 1. | 1. |
| 2. | 2. |
| 3. | 3. |



1/4) 1HT()
 2.3%
 / 5- 6

